

ARS 130

SINGLE DRUM ROLLER

EU STAGE V / U.S. EPA TIER 4 FINAL

APPLICATIONS

- Medium and large compaction sites
- Transport construction
- Municipal and town roads
- Rock fill dams
- Industrial zones
- City centers



PRODUCTIVITY

No-rear-axle

Provides low centre of gravity and high versatility

Compaction performance

Two-stage vibratory system, high compaction output

ERGONOMICS

Platform and cab

Spacious and quiet, with 360° visibility

Operator station

High comfort and safety

SERVICEABILITY

Reduced downtime

Heavy-duty components and robust construction

Reduced maintenance

Extended service intervals; easy-to-reach maintenance points

SUSTAINABILITY

ECODrop

Improved efficiency, reduced use of fluids

Digitalization

Advanced monitoring and measuring systems

OPTIONAL EQUIPMENT

- A/C
- A/C without cooling medium
- Additional documentation printed
- AmmannCare Diamond
- AmmannCare Platinum
- AmmannCare Gold
- AmmannCare Silver
- Ammann Documentation Syst. ADS
- Ammann Documentation Syst. ADS RTK
- Additional storage rack Cab version
- ATC - Ammann Traction Control
- Back-up alarm
- Back-up alarm adaptive
- Cab ROPS
- Certificate of origin
- Color scheme customer
- Compaction measuring system ACE^{force}
- Container shipment preparation
- Dozer blade incl. transport lock
- Drive HX (ATC mandatory)
- Drum PD - including scrapers
- Engine air inlet pre-cleaner
- Fire extinguisher
- Fuel tank lock
- GPS Q-Compaction ACE
- GPS Q-Compaction preparation
- GPS Q-Compaction preparation ACE
- Homologation Italy (plate only)
- Hydraulic oil biodegradable
- Measuring points central
- Padfoot Shell Kit - including scrapers
- Plate for Static Test
- Radio DAB
- Radio preparation
- Rear view camera
- Registration plate holder incl. light
- Road lights incl. turn signals
- Scrapers vulcolan for smooth drum
- Seat belt 3"
- Maintenance Kit 1000h
- Maintenance Kit 2000h
- Maintenance Kit 500h
- Slow moving vehicle triangle
- Sun visor
- Tachograph complete
- Telematics Servicelink Plus
- Telematik Servicelink Pro
- Telematics preparation
- Tool box
- Toolset
- Tractor tyres
- Warning beacon LED
- Warning beacon LED green
- Greasing tool

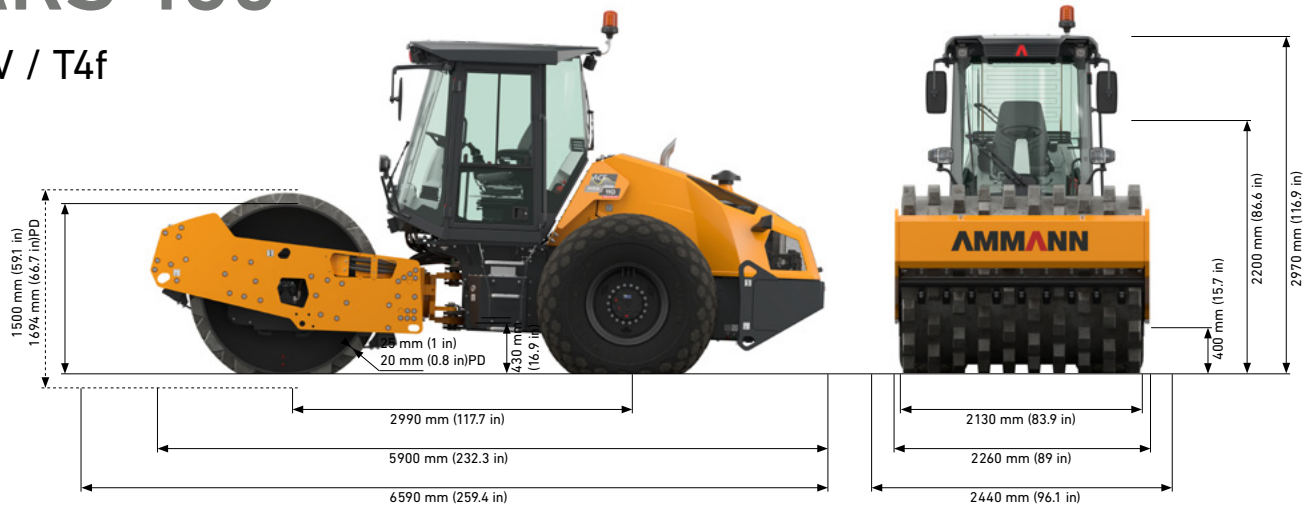
STANDARD EQUIPMENT

- Open platform with ROPS
- Smooth drum
- Steel scrapers
- Diamond tread tyres
- ECODrop
- Inter wheel flow divider
- 2 amplitudes / Multiple frequencies
- Operator's station with one drive lever (RH)
- Rotatable and horizontally adjustable driver's seat with armrests
- Multi-functional display for machine control and overview
- Adjustable steering column
- Intelligent drive lever
- 12V outlet
- Battery disconnection switch
- Working lights (front / rear) - LED
- Standard hydraulic oil
- Testports on hydrocomponents
- Manual hood opening and Cab tilting
- Telematics Ready
- Ammann color design and decals
- External draining points
- On-board diagnostics
- CE conformity
- Safety cover fan and alternator
- Tyre ballast -25°C

AMMANN

ARS 130

StV / T4f



WEIGHT & OPERATING CHARACTERISTICS

		PD	HX	HXPD
OPERATING WEIGHT	12 440 kg (27426 lb)	13 065 kg (28803 lb)	12 530 kg (27624 lb)	13 155 kg (29002 lb)
OPERATING WEIGHT MAX.	14 850 kg (32739 lb)	13 960 kg (30777 lb)	14 940 kg (32937 lb)	14 050 kg (30975 lb)
STATIC LINEAR LOAD	32.4 kg/cm (181.4 lb/in)	-	32.8 kg/cm (183.7 lb/in)	-
NUMBER OF PADS	-	140 pcs	-	140 pcs
PAD CONTACT SURFACE	-	120 cm ² (18.6 sq in)	-	120 cm ² (18.6 sq in)
PAD HEIGHT	-	100 mm (3.9 in)	-	100 mm (3.9 in)
MAX. WORKING SPEED	7.6 km/h (4.7 MPH)	7.6 km/h (4.7 MPH)	5.1 km/h (3.2 MPH)	5.1 km/h (3.2 MPH)
MAX. TRANSPORT SPEED	12 km/h (7.5 MPH)	12 km/h (7.5 MPH)	10 km/h (6.2 MPH)	10 km/h (6.2 MPH)
GRADEABILITY WITHOUT VIBRATION	52%	54%	67%	67%
GRADEABILITY WITH VIBRATION	50%	50%	55%	55%
TURNING RADIUS (INNER)	3 560 mm (140.2 in)	3 560 mm (140.2 in)	3 560 mm (140.2 in)	3 560 mm (140.2 in)

COMPACTION FORCES

	PD	
FREQUENCY I	25-31 Hz (1500-1860 vpm)	25-31 Hz (1500-1860 vpm)
FREQUENCY II	25-35 Hz (1500-2100 vpm)	25-35 Hz (1500-2100 vpm)
CENTRIFUGAL FORCE I	186-285 kN (41,814-64,071 lbf)	186-285 kN (41814-64071 lbf)
CENTRIFUGAL FORCE II	79-155 kN (17,760-34,845 lbf)	79-155 kN (17760-34845 lbf)
AMPLITUDE I	1.96 mm (0.077 in)	1.88 mm (0.074 in)
AMPLITUDE II	0.83 mm (0.033 in)	0.76 mm (0.030 in)

MAXIMUM RECOMMENDED COMPACTED LIFT THICKNESS AT OPTIMAL WORKING CONDITIONS

	PD	
ROCKFILL	* 1 000 mm (39 in)	-
SAND / GRAVEL	* 700 mm (28 in)	-
MIXED SOILS	* 600 mm (24 in)	* 600 mm (24 in)
SILT	450 mm (18 in)	* 450 mm (18 in)
CLAY	270 mm (11 in)	* 320 mm (13 in)

* Recommended drum type

MISCELLANEOUS

BRAKES OPERATING	Hydrostatic
BRAKES PARKING	Multiple-disc spring brake
BRAKES EMERGENCY	Multiple-disc spring brake
FUEL TANK CAPACITY	345 l (91.1 gal)
HYDRAULIC TANK CAPACITY	76 l (20.1 gal)
STEERING ANGLE	±36°
OSCILLATION ANGLE	±10°
BATTERY VOLTAGE	24V
BATTERY CAPACITY	2x90 Ah

ENGINE

MANUFACTURER	Perkins
ENGINE TYPE	904J
POWER ACCORDING TO ISO 14396	100 kW (134 HP)
ENGINE SPEED	2200 rpm
EXHAUST GAS AFTER-TREATMENT	EGR+DOC+DPF+SCR
EMISSION STAGE	EU Stage V / U.S. EPA Tier 4 Final

ARS 130 StV

For additional product information and services please visit: www.ammann.com

Materials and specification data are subject to change without notice.

MSS-3275-01-EN-US | © Ammann Group

AMMANN