



**TERAPRO**

**AGRICULTURE**

# **EQUIPMENT GUIDE**

**STAY ON TOP OF  
YOUR OPERATIONS!**



**#WITHOUTCOMPROMISE**





**AMAZONE**



**ZA-V**



**ZG-TS**



**ZA-TS**

## SPREADERS ZA

- Application rate of up to 650kg/min;
- Section control of up to 128 sections;
- Independent hydraulic spinners;
- Argus spread pattern monitoring (unique to Amazone);
- WindControl system.



**AMAZONE**

**UF**



**UX**

## SPRAYERS UF 02

- Spraying widths from 40 to 100 ft;
- Continuous liquid circulation system on boom;
- AmaSwitch individual section control;
- Comfort pack for automatic cleaning; filling and agitation.

## SPRAYERS UX 01

- Spraying widths from 60 to 131 ft;
- Profiled chassis with suspension and suspended ramp;
- Individual section control and AmaSelect pressure regulation;
- Automatic boom tracking with ContourControl and SwingStop.



Catros +

Ceus



## COMPACT DISC HARROWS CATROS +

- High speed disc with 20" discs;
- Ground following with ContourFrame system;
- Many roller options available;
- Hydraulic depth from the cab.

## COMPACT DISC HARROWS CEUS

- Combined disc and shank;
- Maximum residue incorporation with machine versatility;
- Can be used without a roller;
- Possibility of working with a multitude of combinations (discs and shanks).



Halo

HSD AND VRT

BBI



## HALO

- 10 possible models from 20 to 40 ft;
- All models designed for highspeed operation;
- The HALO VRT has hydraulically adjustable blade angles.

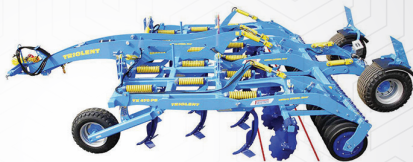
## SPINNER SPREADERS

- Spreaders for straight rate, or variable rate application;
- Some spreader models are engineered to apply more than one type of material;
- The Sniper Spreader can cover up to 120 ft intervals with dry fertilizer, and adjust the spread pattern to your precision map.





Softer PRO



Triolent



Softer

### SOFTER PRO

- Quickly and easily adjust your working depth from the comfort of your cab;
- New X-Mounting of the discs - prevents lateral pulls on different types of soil;
- Transport Axle tilting;
- Deep soil preparation from 3.8 to 12 cm;
- Offers quality crop residue incorporation and excellent seedbed preparation;
- Available widths - for Softer 500 PRO & 1250 PRO.

### TRIOLENT AND DUOLENT

- Three Point Linkage and Drawbar;
- Great crop residue incorporation due to precise shank placement;
- Deep soil preparation from 4 to 35 cm.



5000 Series

3005 Series



### PLANTERS

- True Depth automatically adjusts the desired depth to each individual row (up and down);
- True Speed system plants up to 192,000 seeds per acre at 12 mph.





## RIGHT OR LEFT UNLOADING AUGER



LC



812



2332

### SEED TENDERS – LC

- Quick seed delivery system on the field.

### DUAL WHEELS CARTS - 812

- Front fold auger for better visibility;
- X-Tended Reach Single Auger models offers more reach.

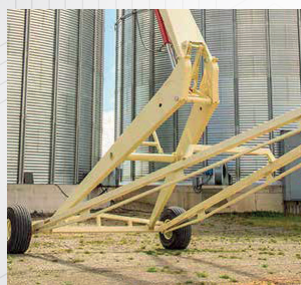
### TRACK GRAIN CARTS – 2332

- Front fold auger for better visibility;
- V4 or Stabilizer Track Systems;
- Right side discharge available on select 12 and 32 series carts;
- X-Tended Reach Dual Auger models offer the same great advantages as the Single Auger models.

## Farm King



1070 TMMR



### BACKSAVER AUGERS 1070 TMMR

- A unique model! Thanks to the SCISSOR LIFT undercarriage that lifts the auger gently and easily;
- Growers can work near silos with peace of mind.



FL440



### **FORAGE BLOWER FL 440**

- Silage blower above competition;
- High performance - 1000 RPM forage blower;
- Easy to use and durability;
- A construction design that has been tested and proven for many years;
- Easy to clean and maintain;
- Hydraulic cylinders to adjust blower height;
- Manual or automatic control for water and additives.



RTX224



RT600



SX1720T

### **FORAGE BOXES**

- Front and rear unload;
- Available lengths from 16 to 40 ft;
- Offers more capacity, more speed and more options than any Forage Box on the market;
- Unique system that can be controlled entirely from inside the cabin.

### **MANURE SPREADERS SX1720T**

- Combines heavy duty components and a high quality spread patterns;



## SIP™



Air 900T



Star 850/26T



Spider 1100/10T



Silvercut disc 1500TFC

### AIR MODEL MERGERS

- Working widths 13 to 29.5 ft;
- Front/trailed/combined.

### RAKES STAR

- Working widths 11 to 41 ft;
- 3-point attachment or trailed.

### TEDDERS SPIDER

- Working widths 14 to 48 ft;
- 3-point attachment or trailed.

### MOWERS SILVERCUT DISC

- Working widths 8 to 48 ft;
- Front/side/combined/trailed.

## OXBO



2334



2114

### 2334 MERGE - TRIPLE WINDROWERS

- High-quality forage;
- Pickup width ranging from 28 to 40 ft.

### SINGLE WINDROWERS

- Uniform windrows for smoother crop feeding into the harvesting unit;
- Designed to offer small-scale producers the same advantages as triple merges.

## SSTA



Snow blade



Front blade



Front blade pull

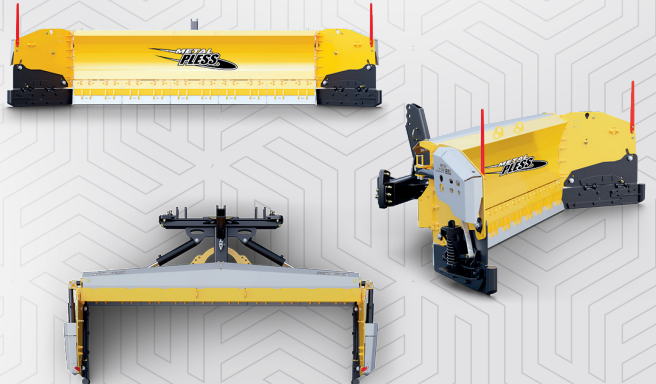
### EXTENDABLE SNOWPLOWS

- Increased productivity;
- Push and pull with the same plow (hydraulic wings);
- Reliability and sturdiness.

## METAL PLESS



Agrimaxx



### AGRIMAXX SNOWPLOWS

- Snowplows with hydraulic wings and angle;
- Installed in front of a tractor with a universal subframe exclusive to Metal Pless.





PXPL/X-PRO

P-980



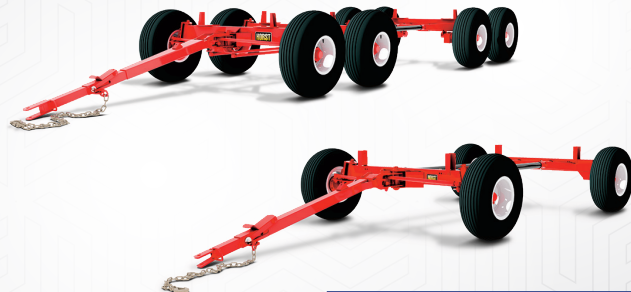
Inverted - Cyclone

### LARGE SELECTION OF CONVENTIONAL AND INVERTED SNOWBLOWERS

- For industrial, commercial and residential usage.



Contour



Available with 4 or 8 wheels

### WAGONS

- Retractable automatic relock tongue;
- Tapered roller bearings on main pivot points;
- Automotive style ball joints;
- Capacity ranging from 6 to 40 tons, depending on the model chosen.



CR11



**FD2 PLUS**  
New Holland by MacDon



T7



T6



T4

## CONTACT OUR PROS FOR THE FULL RANGE OF NEW HOLLAND AGRICULTURAL EQUIPMENT

- Tractors (compact, mid-range, high-power, utility, and specialized);
- Tractors and snow removal equipment;
- Forage equipment;
- Combine harvesters and headers;
- Haying and spreading equipment;
- Spreading and seeding equipment;
- Front loaders and accessories.

Visit our website - [www.terapro.ca](http://www.terapro.ca)

## New 2025 models!

T4 Series Tractors, CR10 & CR11 Combines, and the New Holland FD2 Plus Header by MacDon.



Compact wheel loaders



Compact track loaders



Small articulated loaders



## CONTACT OUR PROS FOR THE FULL RANGE OF NEW HOLLAND CONSTRUCTION EQUIPMENT

- Mini track loaders;
- Compact track loaders;
- Compact wheel loaders;
- Small articulated loaders.

Visit our website - [www.terapro.ca](http://www.terapro.ca)





**TERAPRO**  
AGRICULTURE

**1-844-802-0756**

TECHNOLOGIES@TERAPRO.CA

## TURNKEY TELEMATICS SERVICES

- EXPERTISE, ADVICE
- SALES AND INSTALLATION
- CALIBRATION, UPDATES
- SETUP
- ON-SITE AND REMOTE SUPPORT
- INFORMATION PROCESSING SERVICE
- FINANCING AVAILABLE



Trimble

RAVEN



Hemisphere

Take an appointment with our team today!

**TERAPRO.CA**



Productivity  
Plus



**WE OFFER THE BEST BRANDS  
FOR YOUR DAILY WORK!**



**NEW HOLLAND**



**AMAZONE**



**NEW HOLLAND** | by MacDon

**Farmet**

**KINZE**



**Farm King**

**FIELD LINE  
EQUIPMENT**



**SIP™**

**SSTA**

**METAL  
PLESS**

**Pronovost**

**HORST  
WAGONS**

## 24-MONTH WARRANTY ON CNH REMAN\*

- Take advantage of an exceptional 24-month warranty on **CNH** remanufactured parts! Optimize the productivity of your equipment at a lower cost while being well protected;
- Choose to have your remanufactured parts installed by our in-store experts and benefit also from the **24-month work shop warranty**.

## OPT FOR EQUIPMENT READY TO WORK!

When the time comes to head to the field, our team can offer you peace of mind through our inspections. Additionally, we can provide you with **favorable rates** by enrolling in our financing programs\* on your CNH Industrial account.

\* Certain conditions apply. Contact your local dealer for more information.



**LARGE INVENTORY  
OF USED EQUIPMENT,  
ALL BRANDS INCLUDED.**



VISIT OUR USED EQUIPMENTS WEBSITE



\$\$\$

**EXCEPTIONAL PRICES**  
on used equipments  
and financing options



**COMPETITIVE PRICES**  
on transport fee



**EQUIPMENTS**  
ready to work

**CONTACT US • 1 844 352-2328**



TERAPRO.ca

**COOKSHIRE**  
819 569-9611

**DALHOUSIE**  
450 269-2737

**NICOLET**  
819 293-5252

**PLAISANCE**  
819 427-5476

**SAINT-GUILLAUME**  
819 396-2185

**SAINTE-MARTINE**  
450 427-0955

**SAINT-JEAN-  
SUR-RICHELIEU**  
450 347-5596

**SAINT-  
HYACINTHE**  
450 796-3707

**VICTORIAVILLE**  
819 758-0675

**WOTTON**  
819 828-2661