

## ENGINE

|  |   |
|--|---|
| Model                                    | Isuzu AQ-6WG1X<br>Cooled EGR  |
| Emissions Certification                  | Tier 4 Final  |
| Fuel                                     | Requires ultra low-sulfur fuel<br>B5 biodiesel tolerant   |
| Type                                     | Water-cooled, 4-cycle,<br>high pressure common rail system.<br>Turbo-charged w/ air cooled<br>intercooler, SCR system |
| Cylinders                                | 6-cylinder in-line  |
| Displacement                             | 957 in <sup>3</sup> (15.6 L)  |
| Bore/Stroke                              | 4.72 x 5.71 in<br>(147 x 154 mm)  |
| Fuel injection                           | Direct injection – electronic   |
| Fuel filter                              | Replaceable,<br>full flow spin-on cartridge   |
| Air filter                               | Dry type element<br>w/ warning restriction indicator  |
| Oil filter                               | Replaceable,<br>full flow spin-on cartridge   |
| Engine gradeability:                     |   |
| Side-to-side                             | 35°   |
| Fore and aft                             | 35°   |
| Net horsepower – ISO 14396 @ 1800 RPM:   | 460 HP (343 kW)   |
| Gross horsepower – ISO 14396 @ 1800 RPM: | 512 hp (382 kW)   |
| Net Max. Torque – ISO 14396 @ 1450 RPM:  | 1,623 lb-ft (2 200 N-m)   |
| Cooling operating range:                 | 109° to -13° F (43° to -25° C)  |
| Oil                                      | Requires low-ash oil CJ-4   |

## DRIVETRAIN

|                     |  |
|---------------------|--|
| Travel control      | Dual stage relief/<br>counter balance design |
| Brakes              | Mechanical disc                              |
| Service brakes      | SAHR disc – each motor                       |
| Two speed travel:   |  |
| Max. high speed     | 2.7 mph (4.3 km/h)                           |
| Max. low speed      | 1.9 mph (3.0 km/h)                           |
| Automatic downshift |  |
| Drawbar pull        | 101,000 lbf (449 kN)                         |
| Gradeability        | 70% - 35 degree slope                        |

## ELECTRICAL

|   |                 |
|---|-----------------|
| Voltage                                   | 24 Volts        |
| Alternator rating                         | 50 amp          |
| Batteries                                 | 2 x 12 Volt     |
| Battery reserve capacity                  | 140 Ah/5 hours  |
| Work lights – 4<br>2 boom, 1 upper, 2 cab | 24 Volt/70 watt |

## OPERATOR ENVIRONMENT

|                                  |                        |
|----------------------------------|------------------------|
| Air-conditioner output           | 18,100 BTU/hr          |
| Heater output                    | 20,150 BTU/hr          |
| Sound level inside cab – ISO6395 | 71.0 dBA               |
| Electrical outlet                | 12 Volt                |
| Cab interior light               | 10 watt                |
| Rear view camera                 | Standard               |
| Seat                             | Heated, air-suspension |

## ATTACHMENT

|   |  |
|---|--|
| Boom                                      | 25 ft 4 in (7 700 mm)                      |
| Arm options                               | 9 ft 9 in (3.02 m)                         |
| Bucket digging force*<br>w/ Auto Power Up | 68,790 lbf (306 kN)<br>75,090 lbf (334 kN) |

NOTE: \*Digging force rating based on ISO6015 using an 11 ft 6 in (3 510 mm) arm.

## OPERATING WEIGHT

|                  |                        |
|------------------|------------------------|
| Operating weight | 159,600 lb (72 400 kg) |
| w/ shoes         | 2 ft 11 in (900 mm)    |
| w/ boom          | 21 ft 6 in (6 580 mm)  |
| w/ arm           | 9 ft 9 in (3.02 m)     |
| w/ bucket        | 6,600 lb (2 993 kg)    |
| w/ counterweight | 22,900 lb (10 400 kg)  |

NOTE: w/ operator/full fuel/standard equipment.

## GROUND PRESSURE

@ Standard operating weight 11.3 psi (0.78 bar)  
w/ 35.4 in (900 mm) triple semi-grouser shoes

## HYDRAULICS

|  |   |
|--|---|
| System design  | Open center   |
| Main pumps   | Two variable displacement/<br>axial piston          |
| Max. rated flow  | 2 x 125 gpm (472 L/min)                             |
| System pressures:  |   |
| Boom, arm and bucket<br>w/ Power Boost                       | 4,550 psi (320 bar)<br>4,970 psi (350 bar)          |
| Travel circuits  | 4,970 psi (350 bar)                                 |
| Swing circuits   | 4,050 psi (285 bar)                                 |
| Pilot pump   | 1 x gear design                                     |
| Max. capacity  | 7.1 gpm (27 L/min)                                  |
| Controls   | w/ boom/arm holding valve                           |
| Right track travel,<br>bucket, boom and<br>arm acceleration. | Four-spool section                                  |
| Left track travel,<br>bucket, boom and<br>arm acceleration.  | Five-spool section                                  |
| Work Mode selections   | SP: Speed Priority<br>H: Heavy Duty<br>A: Automatic |
| Swing motor  | Fixed displacement axial piston                     |
| Swing final drive  | Planetary gear reduction                            |
| Travel motor   | Two-speed independent<br>travel/axial piston        |

## HYDRAULIC CYLINDERS

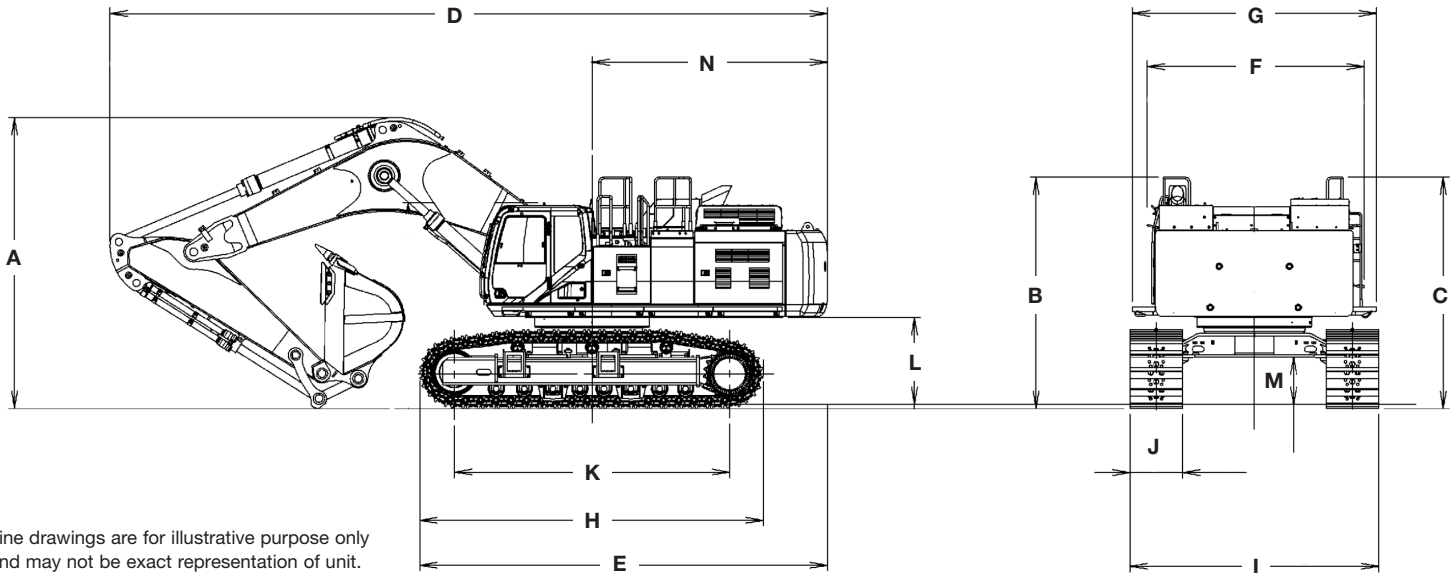
|                       |                    |
|-----------------------|--------------------|
| Boom cylinders        | Two (2)            |
| Cylinder bore         | 7.5 in (190 mm)    |
| Cylinder rod diameter | 5.1 in (130 mm)    |
| Cylinder stroke       | 71.1 in (1 805 mm) |
| Arm cylinder          | One (1)            |
| Cylinder bore         | 8.3 in (210 mm)    |
| Cylinder rod diameter | 5.7 in (145 mm)    |
| Cylinder stroke       | 80.9 in (2 055 mm) |
| Bucket cylinder       | One (1)            |
| Cylinder bore         | 7.9 in (200 mm)    |
| Cylinder rod diameter | 5.5 in (140 mm)    |
| Cylinder stroke       | 57.1 in (1 450 mm) |

## SERVICE CAPACITIES

|                       |                  |
|-----------------------|------------------|
| Fuel tank             | 238 gal (900 L)  |
| Hydraulic system      | 172 gal (650 L)  |
| Hydraulic tank        | 81.9 gal (310 L) |
| Engine oil w/filter   | 13.7 gal (52 L)  |
| Swing drive           | 3.6 gal (13.5 L) |
| Final drive-each side | 4.0 gal (15.0 L) |
| Cooling system        | 28.5 gal (108 L) |
| Def tank              | 40 gal (152 L)   |

## OTHER SPECIFICATIONS

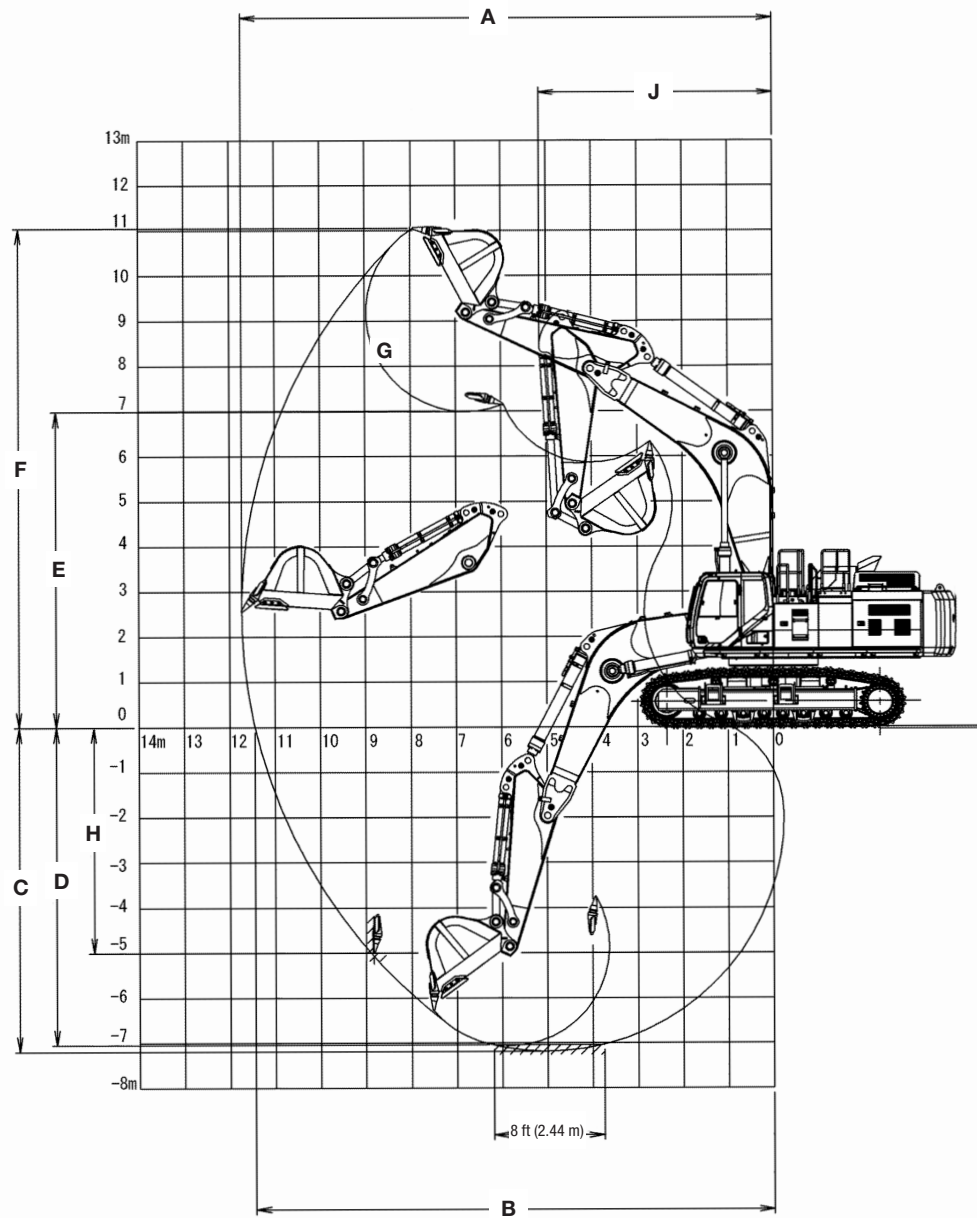
|                        |                             |
|------------------------|-----------------------------|
| Swing speed            | 0 - 6.7 RPM                 |
| Swing torque           | 178,000 lb-ft (241 000 N-m) |
| Swing brake            | Mechanical disc             |
| Undercarriage:         |                             |
| Length                 | 19 ft 4 in (5 880 mm)       |
| Track gauge            | 10 ft 10 in (3 350 mm)      |
| Carrier rollers        | 3                           |
| Track rollers          | 8                           |
| Shoes – Triple grouser | 47                          |
| Link pitch             | 10.25 in (260.35 mm)        |
| Track:                 |                             |
| Chain                  | Grease lubricated/strutted  |
| Guides                 | Single                      |
| Adjustment             | Hydraulic                   |



Line drawings are for illustrative purpose only and may not be exact representation of unit.

## DIMENSIONS

|  | <b>9 ft 9 in (3.02 m) Arm</b> |
|--|-------------------------------|
| <b>A.</b> Overall height – with attachment                 | 16 ft 6 in (4 960 mm)         |
| <b>B.</b> Cab height                                       | 11 ft 6 in (3 510 mm)         |
| <b>C.</b> Overall height – top of guardrail                | 13 ft 5 in (3 950 mm)         |
| <b>D.</b> Overall length – with attachment                 | 40 ft 5 in (12 250 mm)        |
| <b>E.</b> Overall length – without attachment              | 22 ft 8 in (6 960 mm)         |
| <b>F.</b> Width of upperstructure – without catwalks       | 12 ft 2 in (3 700 mm)         |
| <b>G.</b> Width of upperstructure – with catwalks          | 13 ft 8 in (4 170 mm)         |
| <b>H.</b> Track overall length                             | 19 ft 4 in (5 880 mm)         |
| <b>I.</b> Track overall width with 35.4 in (900 mm) shoes: |                               |
| Extended   | 13 ft 11 in (4 250 mm)        |
| Retracted  | 11 ft 11 in (3 640 mm)        |
| <b>J.</b> Track shoe width                                 | 2 ft 11 in (900 mm)           |
| <b>K.</b> Center to center – idler to sprocket             | 15 ft 5 in (4 710 mm)         |
| <b>L.</b> Upperstructure ground clearance                  | 4 ft 11 in (1 500 mm)         |
| <b>M.</b> Minimum ground clearance                         | 2 ft 9 in (825 mm)            |
| <b>N.</b> Rear tail swing radius                           | 13 ft 3 in (4 050 mm)         |
| Operating weight   | 159,600 lb (72 400 kg)        |
| Ground pressure  | 11.2 psi (0.78 bar)           |



### PERFORMANCE SPECS

|   | <b>9 ft 9 in (3.02 m) Arm</b> |
|---|-------------------------------|
| <b>A.</b> Maximum dig radius                          | 39 ft 4 in (11 730 mm)        |
| <b>B.</b> Dig radius at groundline                    | 37 ft 11 in (11 440 mm)       |
| <b>C.</b> Maximum dig depth                           | 24 ft 2 in (7 180 mm)         |
| <b>D.</b> Dig depth - 8 ft 0 in (2.44 m) level bottom | 23 ft 10 in (7 030 mm)        |
| <b>E.</b> Dump height                                 | 23 ft 1 in (6 990 mm)         |
| <b>F.</b> Maximum reach height                        | 36 ft 8 in (11 060 mm)        |
| <b>G.</b> Bucket rotation                             | 170°                          |
| <b>H.</b> Maximum vertical wall dig depth             | 12 ft 9 in (5 000 mm)         |
| <b>J.</b> Minimum swing radius                        | 17 ft 8 in (5 150 mm)         |
| Arm digging force:                                    |                               |
| Standard  | 63,170 lb (281 kN)            |
| Power Boost   | 69,020 lb (307 kN)            |
| Bucket digging force:                                 |                               |
| Standard  | 75,310 lb (335 kN)            |
| Power Boost   | 82,280 lb (366 kN)            |

**LIFT CAPACITIES**

**CX750D ME – 21 ft 7 in (6.58 m) Boom and 9 ft 11 in (3.02 m) Arm** Lift capacities using a bucket weighing 7,470 lb (3 390 kg) and 23,030 lb (10 450 kg) counterweight.

| Load (Lift Point Height) | MINIMUM REACH        |                         |                         | 0 ft (0 m) |      | 5 ft (1.5 m)            |                         | 10 ft (3 m)             |                         | 15 ft (4.5 m)           |                         |
|--------------------------|----------------------|-------------------------|-------------------------|------------|------|-------------------------|-------------------------|-------------------------|-------------------------|-------------------------|-------------------------|
|                          | @                    | END                     | SIDE                    | END        | SIDE | END                     | SIDE                    | END                     | SIDE                    | END                     | SIDE                    |
| +30 ft (9 m)             | 28 ft 1 in (8.46 m)  | 16,750 lb* (7 100 kg)*  | 16,750 lb* (7 100 kg)*  |            |      |                         |                         |                         |                         |                         |                         |
| +25 ft (7.5 m)           | 25 ft 7 in (7.79 m)  | 21,800 lb* (10 610 kg)* | 21,800 lb* (10 610 kg)* |            |      |                         |                         |                         |                         |                         |                         |
| +20 ft (6 m)             | 23 ft 10 in (7.21 m) | 32,550 lb* (14 910 kg)* | 32,550 lb* (14 910 kg)* |            |      |                         |                         |                         |                         |                         |                         |
| +15 ft (4.5 m)           | 18 ft 4 in (5.43 m)  | 44,700 lb* (21 020 kg)* | 44,700 lb* (21 020 kg)* |            |      |                         |                         |                         |                         |                         |                         |
| +10 ft (3 m)             | 12 ft 11 in (3.93 m) | 22,500 lb* (10 190 kg)* | 22,500 lb* (10 190 kg)* |            |      |                         |                         |                         |                         | 65,400 lb* (30 410 kg)* | 65,400 lb* (30 410 kg)* |
| +5 ft (1.5 m)            | 12 ft 6 in (3.8 m)   | 24,100 lb* (10 970 kg)* | 24,100 lb* (10 970 kg)* |            |      |                         |                         |                         |                         | 74,600 lb* (34 560 kg)* | 74,600 lb* (34 560 kg)* |
| Groundline               | 9 ft 7 in (2.93 m)   | 33,900 lb* (15 370 kg)* | 33,900 lb* (15 370 kg)* |            |      |                         |                         | 34,850 lb* (15 560 kg)* | 34,850 lb* (15 560 kg)* | 78,000 lb* (34 500 kg)* | 72,350 lb (33 580 kg)   |
| -5 ft (-1.5 m)           | 2 ft 11 in (0.89 m)  | 29,950 lb* (13 670 kg)* | 29,950 lb* (13 670 kg)* |            |      | 43,300 lb* (19 330 kg)* | 43,300 lb* (19 330 kg)* | 49,150 lb* (21 830 kg)* | 49,150 lb* (21 830 kg)* | 76,600 lb* (35 370 kg)* | 72,250 lb (33 580 kg)   |
| -10 ft (-3 m)            | 3 ft 0 in (0.9 m)    | 43,250 lb* (19 040 kg)* | 43,250 lb* (19 040 kg)* |            |      | 51,950 lb* (23 300 kg)* | 51,950 lb* (23 300 kg)* | 69,700 lb* (30 840 kg)* | 69,700 lb* (30 840 kg)* | 70,000 lb* (32 380 kg)* | 70,000 lb* (32 380 kg)* |
| -15 ft (-4.5 m)          | 5 ft 5 in (1.59 m)   | 73,150 lb* (32 350 kg)* | 73,150 lb* (32 350 kg)* |            |      |                         |                         | 79,100 lb* (36 830 kg)* | 79,100 lb* (36 830 kg)* | 57,600 lb* (26 850 kg)* | 57,600 lb* (26 850 kg)* |
| -20 ft (-6 m)            | 13 ft 7 in (3.74 m)  | 37,950 lb* (19 570 kg)* | 37,950 lb* (19 570 kg)* |            |      |                         |                         |                         |                         | 34,600 lb* (16 860 kg)* | 34,600 lb* (16 860 kg)* |

| Load (Lift Point Height) | 20 ft (6 m)             |                         | 25 ft (7.5 m)           |                         | 30 ft (9 m)             |                         | 35 ft (10.5 m)          |                      | MAXIMUM REACH         |                         |                         |
|--------------------------|-------------------------|-------------------------|-------------------------|-------------------------|-------------------------|-------------------------|-------------------------|----------------------|-----------------------|-------------------------|-------------------------|
|                          | END                     | SIDE                    | END                     | SIDE                    | END                     | SIDE                    | END                     | SIDE                 | @                     | END                     | SIDE                    |
| +30 ft (9 m)             |                         |                         |                         |                         | 19,650 lb* (10 050 kg)* | 19,650 lb* (10 050 kg)* |                         |                      | 30 ft 6 in (9.41 m)   | 17,300 lb* (7 790 kg)*  | 17,300 lb* (7 790 kg)*  |
| +25 ft (7.5 m)           |                         |                         |                         |                         | 25,450 lb* (11 630 kg)* | 25,450 lb* (11 630 kg)* |                         |                      | 33 ft 9 in (10.35 m)  | 16,500 lb* (7 470 kg)*  | 16,500 lb* (7 470 kg)*  |
| +20 ft (6 m)             |                         |                         | 31,800 lb* (14 600 kg)* | 31,800 lb* (14 600 kg)* | 27,400 lb* (12 600 kg)* | 26,900 lb (12 490 kg)   | 21,100 lb* (10 670 kg)* | 19,550 lb (9 180 kg) | 35 ft 10 in (10.94 m) | 16,350 lb* (7 410 kg)*  | 16,350 lb* (7 410 kg)*  |
| +15 ft (4.5 m)           | 41,450 lb* (19 210 kg)* | 41,450 lb* (19 210 kg)* | 34,700 lb* (15 990 kg)* | 34,700 lb* (15 990 kg)* | 30,700 lb* (14 090 kg)* | 25,950 lb (12 100 kg)   | 26,450 lb* (12 190 kg)* | 19,050 lb (8 930 kg) | 36 ft 11 in (11.27 m) | 16,600 lb* (7 510 kg)*  | 16,600 lb* (7 510 kg)*  |
| +10 ft (3 m)             | 48,900 lb* (22 540 kg)* | 48,900 lb* (22 540 kg)* | 38,200 lb* (17 690 kg)* | 34,200 lb (15 910 kg)   | 32,250 lb* (14 840 kg)* | 24,750 lb (11 540 kg)   | 27,550 lb* (12 690 kg)* | 18,450 lb (8 620 kg) | 37 ft 3 in (11.36 m)  | 17,200 lb* (7 820 kg)*  | 16,100 lb (7 300 kg)    |
| +5 ft (1.5 m)            | 54,600 lb* (25 210 kg)* | 46,900 lb (21 820 kg)   | 41,550 lb* (19 220 kg)* | 32,400 lb (15 090 kg)   | 33,600 lb* (15 540 kg)* | 23,700 lb (11 050 kg)   | 27,250 lb (12 700 kg)   | 17,850 lb (8 340 kg) | 36 ft 10 in (11.23 m) | 18,400 lb* (8 350 kg)*  | 16,150 lb (7 320 kg)    |
| Groundline               | 56,500 lb* (26 110 kg)* | 44,850 lb (20 870 kg)   | 43,000 lb* (19 890 kg)* | 31,100 lb (14 490 kg)   | 34,150 lb* (15 820 kg)* | 22,900 lb (10 680 kg)   | 26,750 lb* (12 520 kg)  | 17,500 lb (8 170 kg) | 35 ft 8 in (10.86 m)  | 20,300 lb* (9 220 kg)*  | 16,950 lb (7 700 kg)    |
| -5 ft (-1.5 m)           | 55,550 lb* (25 690 kg)* | 44,200 lb (20 590 kg)   | 42,350 lb* (19 610 kg)* | 30,600 lb (14 250 kg)   | 33,050 lb* (15 370 kg)* | 22,700 lb (10 570 kg)   |                         |                      | 33 ft 7 in (10.25 m)  | 23,400 lb* (10 570 kg)* | 18,850 lb (8 530 kg)    |
| -10 ft (-3 m)            | 51,750 lb* (23 990 kg)* | 44,550 lb (20 730 kg)   | 39,050 lb* (18 190 kg)* | 30,900 lb (14 370 kg)   | 27,850 lb* (13 310 kg)* | 23,400 lb (10 860 kg)   |                         |                      | 30 ft 7 in (9.35 m)   | 25,450 lb* (11 540 kg)* | 22,400 lb (10 100 kg)   |
| -15 ft (-4.5 m)          | 42,600 lb* (19 990 kg)* | 42,600 lb* (19 990 kg)* | 29,250 lb* (14 130 kg)* | 29,250 lb* (14 130 kg)* |                         |                         |                         |                      | 26 ft 3 in (8.07 m)   | 23,550 lb* (10 710 kg)* | 23,550 lb* (10 710 kg)* |
| -20 ft (-6 m)            |                         | (10 670 kg)*            |                         |                         |                         |                         |                         |                      | 18 ft 7 in (6.06 m)   | 24,900 lb* (10 300 kg)* | 24,900 lb* (10 300 kg)* |

NOTE: \*Lift capacities marked with an asterisk (\*) are limited by 87% hydraulic capacity and 75% tipping capacity.

## STANDARD EQUIPMENT

### ENGINE

Isuzu AQ-6WG1X  
Tier 4 Final Certified  
Selective Catalytic Reduction – SCR  
Diesel Oxidation Catalyst – DOC  
Cooled Exhaust Gas Recirculation – CEGR  
EGR Coolers  
Six-cylinder turbo-charged diesel  
VGT turbocharger  
Electronic fuel injection  
High pressure common rail system  
Neutral safety start  
Auto-engine warm up  
Glow-plug pre-heat  
Fuel Economy Assist System – FEA  
Engine Protection Feature – EPF  
Dual-stage fuel filtration  
Dual element air filter  
Remote oil filter  
Drain for fuel tank  
Remote engine oil drain  
500-hour engine oil change interval  
24 Volt system  
Engine oil sample port  
Battery disconnect switch  
Air pre-cleaner – Cyclone  
High ambient temperature cooling package  
Emergency engine stop  
External Fuel and DEF gauges  
Fan housing  
Fuel cooler  
Fuel filter restriction indicator  
Fuel shut-off valve  
Idle start  
Radiator, oil cooler,  
intercooler – protective screen

### FUEL ECONOMY SYSTEMS

Engine Idle/Fuel Economy System:  
Auto-idle  
One-touch idle  
Auto-idle shut-down  
BEC – Boom Economy Control  
AEC – Auto Economy Control  
SWC – Swing Relief Control  
SSC – Spool Stroke Control

### HYDRAULICS

Auto power boost  
Auto swing priority  
Arm speed assistance – 2 pump flow  
Auxiliary flow control  
Auxiliary valve  
Boom speed assistance – 2 pump flow  
Bucket curl assist  
Control levers pre-wired for auxiliary hydraulics  
Electronically controlled hydraulic pumps  
Holding valve – Boom and Arm  
Fire wall  
Hydraulic filter restriction indicator  
Neutral pump de-stroke  
Oil cooler

Power save  
Pump stand-by pressure  
Auto travel speed change  
Selectable work modes  
Free swing  
Hydraulic oil sample port  
Control pattern selector  
Pre-set auxiliary pump settings  
Auxiliary valve  
5,000-hour hydraulic oil change interval  
1,000-hour hydraulic filter change interval  
SAHR brake

### UPPER STRUCTURE

ISO mirrors – 3  
Cab ISO-Mounts – fluid and spring  
Upper mounted work light – 70 watt  
Swivel guard belly pan  
Center cover – over main CV  
Fuel tank belly pan  
Handrail – RH access  
ISO guard rails  
Lifting eyes for counterweight  
Lockable fuel cap, service doors and toolbox

### ATTACHMENTS

Boom – 21 ft 11 in (6 580 mm)  
Heavy-duty bucket linkage  
Boom mounted work light – 70 watt  
Auxiliary pipe brackets  
Centralized grease fittings  
Attachment cushion valve  
Arm and boom regeneration  
Bucket anti-clatter device  
Chrome pins  
Easy Maintenance System (EMS) bushings  
Teardrop pin retention keepers

### OPERATOR ENVIRONMENT

ROPS protection  
FOPS cab top guard – Level 1  
Pressurized cab  
Face vent  
Cab lights – 2  
Interior dome light  
One-touch lock front window  
One piece window – right  
Safety glass windows  
Gate lock hydraulic activation  
Emergency exit and hammer  
Clear polycarbonate roof window with sunshade  
AC/heat/defrost with auto climate control  
LED Color monitor – 7 in (180 mm)  
26 selectable languages for monitor  
On-board diagnostic system  
10 programmable attachments settings on monitor – 5 single flow, 5 dual flow  
Seat belt – 3 in (76 mm)  
Heated high-back cloth seat with air suspension and 65° tilt adjustment  
Sliding seat – 3.54 in (90 mm)

Adjustable armrests  
Tilting consoles – 4-position  
Sliding cockpit – 3.15 in (80 mm)  
Low-effort joystick controls  
Controls pre-wired for auxiliary  
Single pedal travel  
Straight travel  
AM/FM radio with antenna, 2 speakers and Bluetooth capabilities  
Aux-in port for personal electronics  
Radio mute switch – joystick  
Rear-view camera  
Anti-theft system – start code system  
Rubber floormat  
12 Volt electric outlet  
24 Volt cigarette lighter  
Windshield wiper/washer  
Cup holder  
Storage compartments  
Warm/cool storage compartment  
Travel alarm with cancel switch  
Ignition keys  
One key start & lock-up  
Cab filter – external  
Cab handrails  
Operator's manual

### UNDERCARRIAGE

Retractable undercarriage  
35.4 in (900 mm) steel shoes,  
triple semi-grouser  
Full overlap turntable bearing tub  
Double track chain guides  
Hydraulic track adjustment  
Sealed link chain  
Steps  
Carbody belly pan – swivel guard  
X-pattern carbody  
Lashing points – tie downs  
Extra Filter Kit:  
Engine oil filter  
Filter wrench  
Fuel filters  
Grease gun  
Green plug oil drain hose for engine oil drain  
Hydraulic return filter  
Pilot circuit hydraulic filter

### TELEMATICS

CASE SiteWatch™ Telematics – includes hardware and a 3-yr Advanced data subscription

## OPTIONAL EQUIPMENT

### ENGINE

Refueling pump

### HYDRAULICS

Auxiliary hydraulics:

Single acting/joystick activated

Double acting/joystick activated – thumb

Multi-function with electronic pressure control/joystick activated with electronic proportional controls

Secondary low-flow/joystick activated

Proportional hydraulic controls

Hose Burst Check Valve – HBCV

Hydraulic CWT Removal Device

### ATTACHMENTS

Arm options:

9 ft 9 in (3.02 m)

13 ft 5 in (4.11 m)

16 ft 4 in (5.00 m)

Tools:

Heavy-duty/Extreme-duty/Ditching

Buckets; Hammers; Thumbs;

Compaction plates.

Load holding control

### UPPER STRUCTURE

Rubber bumper guard – order through Service Parts

Catwalk – left and right side

### UNDERCARRIAGE

Full Length Track Chain Guards

### OPERATOR ENVIRONMENT

FOPS cab top guard – Level 2

Front grill guard – 2 x 2 in (50.8 x 50.8 mm) screen mesh

Front rock guard – vertical bars

Two piece/OPG 1

Front rock guard – vertical bars

One piece/OPG 2

Rain deflector – not available with

Front guards

Sun visor

Side-view camera

LED Package:

Includes 1 Side view camera and 6 LED

Lights – 2 front cab mounted, 2 rear

mounted and 1 mounted on each side

Full View Monitors (270 degree aerial view)

**CaseCE.com**

©2017 CNH Industrial America LLC. All rights reserved. CASE is a trademark registered in the United States and many other countries, owned by or licensed to CNH Industrial N.V., its subsidiaries or affiliates. CNH Industrial Capital is a trademark in the United States and many other countries, owned by or licensed to CNH Industrial N.V., its subsidiaries or affiliates. Printed in U.S.A. Contains 10% post-consumer fiber.

IMPORTANT: CASE Construction Equipment Inc. reserves the right to change these specifications without notice and without incurring any obligation relating to such change. Availability of some models and equipment builds vary according to the country in which the equipment is used. The illustrations and text may include optional equipment and accessories and may not include all standard equipment. Your CASE dealer/distributor will be able to give you details of the products and their specifications available in your area.



CASE Construction Equipment is biodiesel-friendly. NOTE: All engines meet current EPA emissions regulations. All specifications are stated in accordance with SAE Standards or Recommended Practices, where applicable.



Always read the Operator's Manual before operating any equipment. Inspect equipment before using it, and be sure it is operating properly. Follow the product safety signs and use any safety features provided.

Form No. CCE201701CX750DME

**CX750D ME**

**6 of 6**