

## ENGINE

Model	FPT NEF6
Emissions Certification	Tier 4 Final/Stage V
Fuel	Requires ultra-low sulfur fuel B5 biodiesel tolerant
Type	Water-cooled, 4-cycle diesel, high pressure common rail system – electric control. Fixed geometry turbocharger w/ air cooled intercooler, ATS, EGR-free
Cylinders	6-cylinder in-line
Displacement	411 in <sup>3</sup> (6.728 L)
Bore/Stroke	4.09 x 5.2 in (104 x 132 mm)
Fuel injection	High pressure common rail system – electronic
Fuel filter	Replaceable, full flow spin-on cartridge
Air filter	Dry type dual element w/ warning restriction indicator
Oil filter	Replaceable, full flow spin-on cartridge
Engine gradeability:	
Side-to-side	35°
Fore and aft	35°
Rated flywheel horse power – SAE J1349 @ 1800 RPM:	
ISO 9249	162 hp (120.4 kW)
ISO 14396	166 hp (124 kW)
Net max. torque – SAE J1349 @ 1600 RPM:	
ISO 9249	475 lbf-ft (644 N-m)
ISO 14396	485 lbf-ft (657 N-m)
Cooling operating range:	113° to -4°F (45° to -20°C)
Oil	Requires low-ash oil CJ-4

## DRIVETRAIN

Travel control	Dual stage relief/ counter balance design
Brakes	Mechanical disc
Service brakes	SAHR disc – each motor
Two speed travel:	
Max. high speed	3.5 mph (5.6 km/h)
Max. low speed	2.1 mph (3.4 km/h)
Automatic downshift	
Drawbar pull	42,000 lbf (187 kN)
Gradeability	70% – 35° Slope

## ELECTRICAL

Voltage	24 Volts
Alternator rating	90 amp
Batteries	2 x 12 Volt
Battery reserve capacity	92 Ah/5 hour
Work lights – 4 1 boom, 1 upper, 2 cab	24 Volt/70 watt

## OPERATOR ENVIRONMENT

Air conditioner output	18,100 BTU/hr
Heater output	20,150 BTU/hr
Sound level inside cab – ISO6396	70 dBA
Electrical outlet	12 Volt
Cab interior light	10 watt
Rear and side view cameras	

### Operator's Cab:

Smooth and round shape design cab; Safety glass for all windows; Shock-less cab suspension by 4-point fluid mounting; Sliding front window w/ auto lock; 10" Full-color LCD monitor display; Membrane switch on monitor display; Switch panel (including throttle dial w/ eco-mode switch); Windshield wiper & washer; AM/FM/Bluetooth Radio w/ hands-free phone; Sectioned floor mat; Polycarbonate roof hatch & Sun shade; Auto air conditioner; Roll-over protective structure (ROPS); Top guard OPG level 1 (in cab structure).

### Seat:

Low frequency air suspension w/ air springs and double acting hydraulic damper; Manual weight adjustment; Backrest angle adjustment; Seat height adjustment; Adjustable armrest (Angle and height); Adjustable headrest; Retractable seat belt; Adjustable lumbar support; Console mount on suspension; Control consoles adjust independently of seat.

## ATTACHMENT

Boom	28 ft 7 in (8.70 m)
Arm	21 ft 0 in (6.40 m)
Bucket digging force*	14,600 lbf (65 kN)

NOTE: \*Digging force ratings based on ISO6015.

## OPERATING WEIGHT

Operating weight	52,029 lb (23 600 kg)
w/ shoes	31.5 in (800 mm)
w/ boom	28 ft 7 in (8.70 m)
w/ arm	21 ft 0 in (6.40 m)
w/ bucket	752 lb (341 kg)
w/ counterweight	10,360 lb (4 700 kg)

NOTE: W/ operator/full fuel/standard equipment.

## GROUND PRESSURE

@ Standard operating weight 5.36 psi (0.37 bar)  
w/ 31.5 in (800 mm) triple semi-grouser shoes

## HYDRAULICS

System design	Open center
Main pumps	Two-variable displacement/ axial piston pumps w/ regulating system
Max. rated flow x 2	55.7 gpm (211 L/min) @ 1,800 RPM
System pressures:	
Boom, arm and bucket	4,970 psi (343 bar)
w/ Auto Power Up	5,410 psi (373 bar)
Arm In	3,330 psi (230 bar)
Boom Down	4,270 psi (294 bar)
Travel circuits	4,970 psi (343 bar)
Swing circuits	3,480 psi (240 bar)
Pilot pump	1 x gear design
Max. capacity	4.8 gpm (18 L/min)
Pilot system working pressure:	570 psi (39 bar)

Control valve w/ boom/arm holding valve:  
Right track travel, bucket, boom and  
arm acceleration. 1 x Four-spool section  
Left track travel, auxiliary, swing, boom and  
arm acceleration. 1 x Five-spool section

Work mode selections	SP – Mode Power – Mode Eco – Mode Lift – Mode
Swing motor	Fixed displacement axial piston
Swing brake	Mechanical disc brake
Turn table bearing	Ball bearing type w/ internal gear
Swing final drive	Planetary gear reduction
Travel motor	Two-speed independent travel/axial piston

### HYDRAULIC CYLINDERS

Boom cylinders	Two (2)
Cylinder bore	4.7 in (120 mm)
Cylinder rod diameter	3.3 in (85 mm)
Cylinder stroke	49.4 in (1 255 mm)
Arm cylinder	One (1)
Cylinder bore	5.7 in (145 mm)
Cylinder rod diameter	4.1 in (105 mm)
Cylinder stroke	64.1 in (1 627 mm)
Bucket cylinder	One (1)
Cylinder bore	37.4 in (95 mm)
Cylinder rod diameter	2.6 in (65 mm)
Cylinder stroke	34.6 in (881 mm)

### SERVICE CAPACITIES

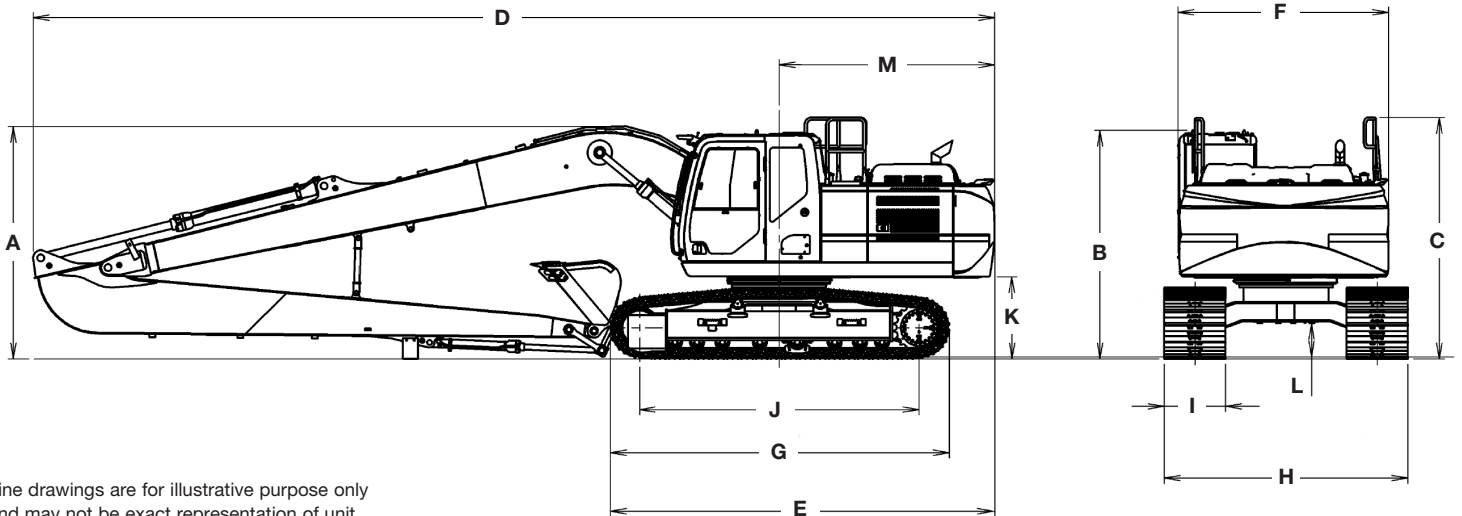
Fuel tank	108 gal (410.0 L)
Hydraulic system	74 gal (280 L)
Hydraulic Sump tank	43 gal (162 L)
Engine oil w/ filter	3.9 gal (14.6 L)
Swing drive	1.3 gal (5.0 L)
Final drive	1.3 gal (5.0 L)
Cooling system	7.9 gal (30.0 L)
DEF Tank	22 gal (84.0 L)

### COOLING SYSTEM

Fan	f 25.6 in (650 mm) with 9-blades
Radiator capacity	66,640 kcal/h (77.5 kW)
Fin type	Corrugated fin (wavy type)
Fin space	0.069 in (1.75 mm)
Long life coolant	Coolant 55%, Water 45%
Oil cooler capacity	49,010 kcal/h (57.0 kW)
Fin type	Corrugated fin (wavy type)
Fin space	0.069 in (1.75 mm)
Intercooler capacity	15,910 kcal/h (18.5 kW)
Fin type	Corrugated fin (wavy type)
Fin space	0.069 in (1.75 mm)
Fuel cooler capacity	1,110 kcal/h (1.3 kW)
Fin type	Corrugated fin (wavy type)
Fin space	0.079 in (2.0 mm)
Filters:	
Suction filter	105 microns
Return filter	6 microns
Pilot line filter	8 microns

### OTHER SPECIFICATIONS

Swing speed	11.5 RPM
Swing torque	38,500 lbf-ft (52 200 N-m)
Swing brake	Mechanical disc
Undercarriage:	
Length	14 ft 8 in (4 470 mm)
Track gauge	7 ft 10 in (2 390 mm)
Carrier rollers	2
Track rollers	8
Shoes – triple grouser	49
Shoe width – std.	31.5 in (800 mm)
Link pitch	7.5 in (190 mm)
Track:	
Chain	Grease lubricated/strutted
Guides	Single
Adjustment	Hydraulic

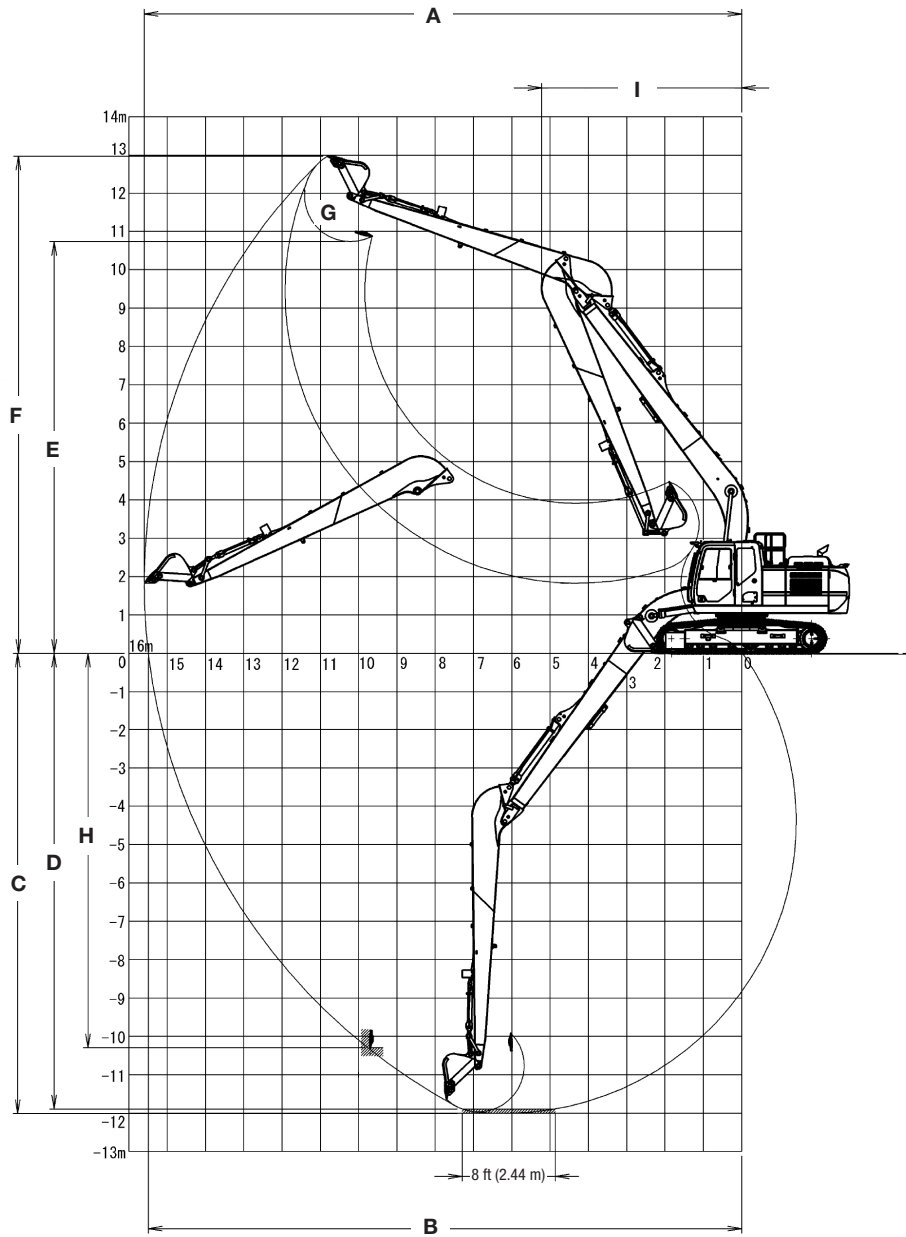


Line drawings are for illustrative purpose only and may not be exact representation of unit.

### DIMENSIONS

	21 ft 0 in (6.40 m) Arm
A. Overall height – with attachment	10 ft 0 in (3 040 mm)
B. Cab height	9 ft 9 in (2 990 mm)
C. Overall height to top of guardrail	10 ft 4 in (3 150 mm)
D. Overall length – with attachment	41 ft 3 in (12 580 mm)
E. Overall length – without attachment	16 ft 7 in (5 050 mm)
F. Width of upper structure	9 ft 1 in (2 760 mm)
G. Track overall length	14 ft 8 in (4 470 mm)
H. Track overall width with 31.5 in (800 mm) shoes	10 ft 5 in (3 190 mm)
I. Track shoe width	2 ft 2 in (800 mm)
J. Center to center – idler to sprocket	12 ft 0 in (3 660 mm)
K. Upper structure ground clearance	3 ft 5 in (1 040 mm)
L. Minimum ground clearance	1 ft 4 in (440 mm)
M. Rear tail swing radius	9 ft 3 in (2 830 mm)
Operating weight*	52,029 lb (23 600 kg)
Ground pressure	5.36 psi (0.37 bar)

NOTE: \*With 28 ft 7 in (8.70 m) boom, 31.5 in (800 mm) track shoe, 752 lb (341 kg) bucket, 165 lb (75 kg) operator, full fuel and standard equipment.



**PERFORMANCE SPECS**

**21 ft 0 in (6.40 m) Arm**

A. Maximum dig radius	51 ft 2 in (15 600 mm)
B. Dig radius at groundline	50 ft 10 in (15 490 mm)
C. Maximum dig depth	39 ft 5 in (12 010 mm)
D. Dig depth – 8 ft 0 in (2.44 m) level bottom	39 ft 0 in (11 890 mm)
E. Dump height	35 ft 2 in (10 730 mm)
F. Maximum reach height	51 ft 2 in (15 600 mm)
G. Bucket rotation	178°
H. Maximum vertical wall dig depth	33 ft 10 in (10 300 mm)
I. Minimum swing radius	17 ft 2 in (5 220 mm)
Arm digging force: Standard	10,300 lbf (46 kN)
Bucket digging force: Standard	14,600 lbf (65 kN)

**LIFT CAPACITIES**

**21 ft 0 in (6.40 m)** Lift capacities using 10,360 lb (4 700 kg) counterweight.

Load (Lift Point Height)	MINIMUM REACH		5 ft (1.5 m)		10 ft (3 m)		15 ft (4.5 m)		20 ft (6 m)		25 ft (7.5 m)		
	@	END	SIDE	END	SIDE	END	SIDE	END	SIDE	END	SIDE	END	SIDE
+35 ft (10.5 m)	34 ft 9 in (10.63 m)	4,650 lb* (2 110 kg)*	4,650 lb* (2 110 kg)*										
+30 ft (9 m)	35 ft 2 in (10.71 m)	4,600 lb* (2 080 kg)*	4,600 lb* (2 080 kg)*										
+25 ft (7.5 m)	34 ft 4 in (10.42 m)	4,700 lb* (2 140 kg)*	4,700 lb* (2 140 kg)*										
+20 ft (6 m)	32 ft 1 in (9.72 m)	5,100 lb* (2 330 kg)*	5,100 lb* (2 330 kg)*										
+15 ft (4.5 m)	27 ft 10 in (8.4 m)	6,000 lb* (2 760 kg)*	6,000 lb* (2 760 kg)*										
+10 ft (3 m)	8 ft 2 in (2.52 m)	8,050 lb* (3 680 kg)*	8,050 lb* (3 680 kg)*			18,350 lb* (7 090 kg)*	18,350 lb* (7 090 kg)*	12,390 lb* (5 620 kg)*	12,390 lb* (5 620 kg)*	9,100 lb* (4 210 kg)*	9,100 lb* (4 210 kg)*	7,550 lb* (3 480 kg)*	7,550 lb* (3 480 kg)*
+5 ft (1.5 m)	9 ft 1 in (2.77 m)	3,500 lb* (1 580 kg)*	3,500 lb* (1 580 kg)*			4,800 lb* (2 060 kg)*	4,800 lb* (2 060 kg)*	15,800 lb* (7 340 kg)*	15,550 lb* (7 190 kg)*	11,150 lb* (5 160 kg)*	10,600 lb* (4 900 kg)*	8,800 lb* (4 060 kg)*	7,800 lb* (3 610 kg)*
Groundline	6 ft 10 in (2.08 m)	2,850 lb* (1 280 kg)*	2,850 lb* (1 280 kg)*			4,700 lb* (2 080 kg)*	4,700 lb* (2 080 kg)*	11,350 lb* (4 920 kg)*	11,350 lb* (4 920 kg)*	12,850 lb* (5 940 kg)*	9,600 lb* (4 440 kg)*	9,950 lb* (4 580 kg)*	7,150 lb* (3 310 kg)*
-5 ft (-1.5 m)	1 ft 6 in (0.47 m)	4,400 lb* (1 990 kg)*	4,400 lb* (1 990 kg)*	4,250 lb* (1 910 kg)*	4,250 lb* (1 910 kg)*	5,950 lb* (2 650 kg)*	5,950 lb* (2 650 kg)*	10,650 lb* (4 670 kg)*	10,650 lb* (4 670 kg)*	14,050 lb* (6 480 kg)*	8,950 lb* (4 140 kg)*	10,800 lb* (4 990 kg)*	6,650 lb* (3 090 kg)*
-10 ft (-3 m)	0 ft 0 in (0 m)	5,750 lb* (2 580 kg)*	5,750 lb* (2 580 kg)*	5,900 lb* (2 660 kg)*	5,900 lb* (2 660 kg)*	7,600 lb* (3 380 kg)*	7,600 lb* (3 380 kg)*	11,600 lb* (5 120 kg)*	11,600 lb* (5 120 kg)*	14,400 lb* (6 700 kg)*	8,600 lb* (3 960 kg)*	10,450 lb* (4 850 kg)*	6,400 lb* (2 960 kg)*
-15 ft (-4.5 m)	0 ft 0 in (0 m)	7,100 lb* (3 180 kg)*	7,100 lb* (3 180 kg)*	7,650 lb* (3 430 kg)*	7,650 lb* (3 430 kg)*	9,450 lb* (4 210 kg)*	9,450 lb* (4 210 kg)*	13,400 lb* (5 920 kg)*	12,850 lb* (5 920 kg)*	14,300 lb* (6 640 kg)*	8,500 lb* (3 930 kg)*	10,300 lb* (4 790 kg)*	6,250 lb* (2 900 kg)*
-20 ft (-6 m)	0 ft 0 in (0 m)	8,600 lb* (3 860 kg)*	8,600 lb* (3 860 kg)*	9,550 lb* (4 260 kg)*	9,550 lb* (4 260 kg)*	11,650 lb* (5 170 kg)*	11,650 lb* (5 170 kg)*	15,950 lb* (7 280 kg)*	13,050 lb* (6 070 kg)*	14,350 lb* (6 680 kg)*	8,550 lb* (3 960 kg)*	10,350 lb* (4 860 kg)*	6,250 lb* (2 900 kg)*
-25 ft (-7.5 m)	2 ft 1 in (0.58 m)	10,700 lb* (4 770 kg)*	10,700 lb* (4 770 kg)*	11,600 lb* (5 170 kg)*	11,600 lb* (5 170 kg)*	14,200 lb* (6 290 kg)*	14,200 lb* (6 290 kg)*	17,900 lb* (8 300 kg)*	13,500 lb* (6 250 kg)*	13,700 lb* (6 340 kg)*	8,800 lb* (4 060 kg)*	10,500 lb* (4 860 kg)*	6,400 lb* (2 970 kg)*
-30 ft (-9 m)	6 ft 2 in (1.73 m)	14,550 lb* (6 360 kg)*	14,550 lb* (6 360 kg)*			17,350 lb* (7 650 kg)*	17,350 lb* (7 650 kg)*	15,550 lb* (7 280 kg)*	14,100 lb* (6 520 kg)*	12,050 lb* (5 640 kg)*	9,200 lb* (4 250 kg)*	9,600 lb* (4 500 kg)*	6,750 lb* (3 110 kg)*
-35 ft (-10.5 m)	16 ft 0 in (4.23 m)	11,150 lb* (5 900 kg)*	11,150 lb* (5 900 kg)*					12,412 lb* (5 630 kg)*	12,412 lb* (5 630 kg)*	9,050 lb* (4 370 kg)*	9,050 lb* (4 370 kg)*		

Load (Lift Point Height)	30 ft (9 m)		35 ft (10.5 m)		40 ft (12 m)		45 ft (13.5 m)		MAXIMUM REACH		
	END	SIDE	END	SIDE	END	SIDE	END	SIDE	@	END	SIDE
+35 ft (10.5 m)			4,650 lb* (2 109 kg)*	4,650 lb* (2 109 kg)*					37 ft 2 in (11.47 m)	3,100 lb* (1 400 kg)*	3,100 lb* (1 400 kg)*
+30 ft (9 m)					3,550 lb* (1 920 kg)*	3,550 lb* (1 920 kg)*			40 ft 8 in (12.47 m)	2,950 lb* (1 340 kg)*	2,950 lb* (1 340 kg)*
+25 ft (7.5 m)			4,700 lb* (2 150 kg)*	4,700 lb* (2 150 kg)*	4,800 lb* (2 170 kg)*	4,400 lb* (2 070 kg)			43 ft 3 in (13.22 m)	2,900 lb* (1 320 kg)*	2,900 lb* (1 320 kg)*
+20 ft (6 m)			5,000 lb* (2 300 kg)*	5,000 lb* (2 300 kg)*	4,950 lb* (2 260 kg)*	4,300 lb* (2 010 kg)	3,000 lb* (1 750 kg)*	3,000 lb* (1 560 kg)	45 ft 1 in (13.78 m)	2,900 lb* (1 320 kg)*	2,900 lb* (1 320 kg)*
+15 ft (4.5 m)	5,800 lb* (2 670 kg)*	5,800 lb* (2 670 kg)	5,450 lb* (2 500 kg)*	5,300 lb* (2 470 kg)	5,250 lb* (2 390 kg)*	4,150 lb* (1 930 kg)	4,400 lb* (2 300 kg)*	3,250 lb* (1 520 kg)	46 ft 4 in (14.15 m)	2,950 lb* (1 350 kg)*	2,950 lb* (1 350 kg)*
+10 ft (3 m)	6,600 lb* (3 040 kg)	6,450 lb* (2 990 kg)	6,000 lb* (2 750 kg)	5,000 lb* (2 330 kg)	5,600 lb* (2 550 kg)*	3,950 lb* (1 840 kg)	4,950 lb* (2 320 kg)	3,150 lb* (1 470 kg)	47 ft 1 in (14.35 m)	3,050 lb* (1 390 kg)*	2,850 lb* (1 290 kg)
+5 ft (1.5 m)	7,400 lb* (3 420 kg)	5,950 lb* (2 770 kg)	6,550 lb* (3 010 kg)*	4,700 lb* (2 180 kg)	5,900 lb* (2 730 kg)*	3,750 lb* (1 750 kg)	4,850 lb* (2 260 kg)	3,000 lb* (1 410 kg)	47 ft 3 in (14.4 m)	3,200 lb* (1 460 kg)*	2,750 lb* (1 240 kg)
Groundline	8,200 lb* (3 780 kg)	5,550 lb* (2 570 kg)	6,950 lb* (3 230 kg)	4,400 lb* (2 050 kg)	5,700 lb* (2 640 kg)	3,550 lb* (1 660 kg)	4,750 lb* (2 200 kg)	2,900 lb* (1 350 kg)	46 ft 10 in (14.28 m)	3,450 lb* (1 560 kg)*	2,700 lb* (1 220 kg)
-5 ft (-1.5 m)	8,350 lb* (3 880 kg)	5,200 lb* (2 420 kg)	6,700 lb* (3 120 kg)	4,200 lb* (1 940 kg)	5,550 lb* (2 570 kg)	3,400 lb* (1 580 kg)	4,650 lb* (2 150 kg)	2,800 lb* (1 310 kg)	45 ft 11 in (14.01 m)	3,750 lb* (1 690 kg)*	2,700 lb* (1 230 kg)
-10 ft (-3 m)	8,100 lb* (3 760 kg)	5,000 lb* (2 310 kg)	6,550 lb* (3 040 kg)	4,000 lb* (1 870 kg)	5,400 lb* (2 520 kg)	3,300 lb* (1 540 kg)	4,519 lb* (2 050 kg)*	2,844 lb* (1 290 kg)	44 ft 5 in (13.56 m)	4,150 lb* (1 880 kg)*	2,850 lb* (1 280 kg)
-15 ft (-4.5 m)	8,000 lb* (3 710 kg)	4,850 lb* (2 260 kg)	6,450 lb* (3 000 kg)	3,950 lb* (1 830 kg)	5,400 lb* (2 500 kg)	3,300 lb* (1 520 kg)			42 ft 3 in (12.92 m)	4,800 lb* (2 160 kg)*	3,050 lb* (1 380 kg)
-20 ft (-6 m)	8,000 lb* (3 710 kg)	4,900 lb* (2 260 kg)	6,500 lb* (3 010 kg)	3,950 lb* (1 840 kg)	5,578 lb* (2 530 kg)	3,417 lb* (1 550 kg)			39 ft 5 in (12.07 m)	5,600 lb* (2 510 kg)	3,400 lb* (1 540 kg)
-25 ft (-7.5 m)	8,150 lb* (3 770 kg)	5,000 lb* (2 320 kg)	6,650 lb* (3 070 kg)	4,150 lb* (1 900 kg)					35 ft 7 in (10.94 m)	6,550 lb* (2 920 kg)	4,050 lb* (1 810 kg)
-30 ft (-9 m)	7,550 lb* (3 590 kg)	5,350 lb* (2 450 kg)							30 ft 5 in (9.44 m)	7,350 lb* (3 320 kg)*	5,250 lb* (2 310 kg)
-35 ft (-10.5 m)									23 ft 2 in (7.35 m)	7,550 lb* (3 420 kg)*	7,550 lb* (3 420 kg)*

NOTE: \*Following number indicates hydraulic capacity

## STANDARD EQUIPMENT

### ENGINE

FPT NEF6  
Tier 4 Final/Stage V Certified  
Selective Catalytic Reduction  
on Filter – SCRoF  
Six-cylinder turbo-charged diesel  
Fixed geometry turbocharger  
High pressure common rail  
system - electronic  
Neutral safety start  
Auto-engine warm up  
Air intake heater  
Fuel Economy Assist System – FEA  
Engine Protection Feature – EPF  
Dual-stage fuel filtration  
Dual element air filter  
Remote oil filter  
Drain for fuel tank  
1,000-hour engine oil/filter interval  
24-volt system  
Engine oil sample port  
Battery disconnect switch  
Emergency engine stop  
External Fuel and DEF gauges  
Fan housing  
Fuel cooler  
Fuel filter restriction indicator  
Fuel shut-off valve  
Radiator, oil cooler,  
intercooler – protective chaff screen

### FUEL ECONOMY SYSTEMS

Engine Idle/Fuel Economy System:  
Auto-idle  
One-touch idle  
Timed engine shut down  
BEC – Boom Economy Control  
AEC – Auto Economy Control  
SWC – Swing Relief Control  
SSC – Spool Stroke Control

### HYDRAULIC CONTROLS

Boom/Arm/Bucket/Swing:  
Pilot pressure control system  
(ISO or SAE control pattern)  
Work mode select:  
1 SP – mode  
2 Power – mode  
3 Eco – mode  
4 Lift – mode  
Travel mode select – 2-speed travel with  
auto downshift  
Attachment cushion control  
Hydraulic lock – gate lock, left side tilt console  
Single pedal travel  
Custom flow balance adjustment:  
Arm in vs. boom up  
Arm in vs. swing  
Multi-function with electronic pressure  
and flow control/joystick activated  
with electronic configurable  
proportional controls

### UPPER STRUCTURE

ISO mirrors – 3  
Cab ISO-Mounts – fluid and spring  
Upper mounted work light – 70 watt  
Swivel guard belly pan  
Center cover – over main CV  
Fuel tank belly pan  
Handrail – RH access  
ISO guard rails  
Lifting eyes for counterweight  
Lockable fuel cap, service doors and tool box

### ATTACHMENTS

Boom – 28 ft 7 in (8.70 m)  
Arm – 21 ft 0 in (6.40 m)  
Heavy-duty bucket linkage  
Boom mounted work light – 70 watt  
Auxiliary pipe brackets  
Centralized grease fittings  
Attachment cushion valve  
Arm and boom regeneration  
Bucket anti-clatter device  
Chrome pins  
Easy Maintenance System (EMS)

### OPERATOR ENVIRONMENT

Operators cab:  
Smooth and round shape design cab  
Safety glass for all windows  
Shock-less cab suspension by 4-point  
fluid mounting  
Sliding front window with auto lock  
10 in Full-color LCD monitor display  
Membrane switch on monitor display with  
5 configurable button on bottom  
of monitor  
Switch panel – including throttle dial with  
eco-mode switch  
Windshield wiper & washer  
AM/FM/Bluetooth Radio with  
hands-free phone  
Sectioned floor mat  
Polycarbonate roof hatch & Sun shade  
Auto climate control  
Roll-over protective structure – ROPS  
Top guard OPG level 1 – in cab structure  
Operator's seat:  
Low frequency air suspension with  
air springs and double acting  
hydraulic damper.  
With following features:  
Manual weight adjustment  
Backrest angle adjustment  
Seat height adjustment  
Adjustable armrest – Angle and height  
Adjustable headrest  
Retractable seat belt  
Adjustable lumbar support  
Console mount on suspension  
Control consoles adjust  
independently of seat  
Others:  
Rear view mirror – Cab side & Right side  
Rear & Right-side view Camera

### UNDERCARRIAGE

Travel motor	Variable displacement axial piston motor
Brake	Mechanical disc brake
Hydraulic service brake	Brake valve
Final drive	Planetary gear reduction
Travel speeds:	
High	3.5 mph (5.6 km/h) (Automatic travel speed downshifting)
Low	2.1 mph (3.4 km/h)
Drawbar pull	42,300 lbf (188 kN)
Number of carrier rollers	2 – each side
Number of track rollers	8 – each side
Number of shoes	49 – each side
Type of shoe	Triple semi-grouser shoe
Link pitch	7.48 in (190 mm)
Width of shoe	31.5 in (800 mm) S.T.D
Grade-ability	70% (35°)

### TELEMATICS

CASE SiteWatch™ Telematics – includes  
hardware and a 3-yr Advanced  
data subscription for 2-way communication

### MASS

Operating mass	52,029 lb (23 600 kg) with 21 ft (6.40 m) Arm, 0.37 m <sup>3</sup> Bucket, 31.5 in (800 mm) grouser shoe, operator, lubricant, coolant, full fuel tank
Shipping mass	50,700 lb (23 000 kg) Operating mass – (operator mass (75 kg) + full fuel mass + bucket mass (341 kg) + shipping fuel mass
Counterweight mass	10,360 lb (4 700 kg)
Ground pressure	5.36 psi (0.037 MPa) with 21 ft (6.40 m) Arm, 0.37 m <sup>3</sup> Bucket, 31.5 in (800 mm) grouser shoe

### ELECTRICAL SYSTEM

Engine control:  
Dial type throttle control  
One touch idle/Auto deceleration/timed  
engine shutdown system  
Monitor system:  
Message display  
Work mode display  
Machine condition  
Alarm display and buzzer  
Water temperature  
Hydraulic oil temperature  
Fuel level  
Diagnosis system  
Rear & Right-side view camera image  
Urea water level  
Wire harness  
Travel alarm  
Double horn  
Battery  
Lights  
Working light  
Upper 24 V 70 W x1  
Boom 24 V 70 W x1  
Cab 24 V 70 W x2  
Operator's cab room 24 V 10 W x1

## OPTIONAL EQUIPMENT

### ENGINE

Refueling pump  
Air pre-cleaner – Cyclone  
High ambient temperature cooling package

### HYDRAULICS

Auxiliary hydraulics:  
Proportionally controlled secondary  
low-flow auxiliary hydraulics  
Hose Burst Check Valve – HBCV

### MACHINE CONTROL

Leica iCON iXE2 – 2D System  
Leica iCON iXE3 – 3D System

### ATTACHMENTS

Quick coupler/Case multi-pin grabber  
Tools:  
Heavy-duty/Extreme-duty/Ditching Buckets

### UPPER STRUCTURE

Rubber bumper guard – order through  
Service Parts

### UNDERCARRIAGE

35.4 in (900 mm) steel shoes,  
triple semi-grouser  
Track guides – triple

### OPERATOR ENVIRONMENT

FOPS cab top guard – Level 2  
Front grill guard – 2 x 2 in (50.8 x 50.8 mm)  
screen mesh  
Front rock guard – vertical bars  
Two piece/OPG 1  
Front rock guard – vertical bars  
One piece/OPG 2  
Vandal guard (front window) with common key  
Rain deflector – not available with front guards  
Sun visor  
Max View Monitor – 3 cameras with  
270-degree view  
LED Package:  
Includes 6 LED Lights – 2 front cab  
mounted, 2 rear mounted and 1 mounted  
on each side

**CaseCE.com**

©2022 CNH Industrial America LLC. All rights reserved. CASE is a trademark registered in the United States and many other countries, owned by or licensed to CNH Industrial N.V., its subsidiaries or affiliates. CNH Industrial Capital is a trademark in the United States and many other countries, owned by or licensed to CNH Industrial N.V., its subsidiaries or affiliates. Printed in U.S.A. Contains 10% post-consumer fiber.

IMPORTANT: CASE Construction Equipment Inc. reserves the right to change these specifications without notice and without incurring any obligation relating to such change. Availability of some models and equipment builds vary according to the country in which the equipment is used. The illustrations and text may include optional equipment and accessories and may not include all standard equipment. Your CASE dealer/distributor will be able to give you details of the products and their specifications available in your area.



CASE Construction Equipment is biodiesel-friendly. NOTE: All engines meet current EPA emissions regulations. All specifications are stated in accordance with SAE Standards or Recommended Practices, where applicable.



Always read the Operator's Manual before operating any equipment. Inspect equipment before using it, and be sure it is operating properly. Follow the product safety signs and use any safety features provided.

Form No. CCE202210CX220ELR

**CX220E LR**

**6 of 6**